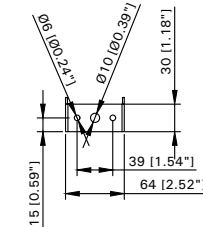
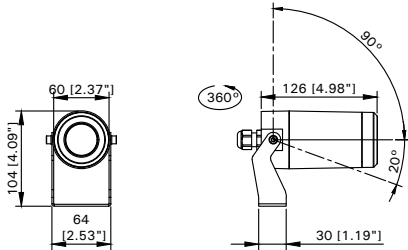


INSTALLATION AND SERVICE MANUAL

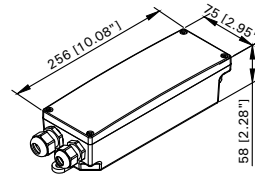
For Installation of Edinburgh 1 Floodlights Projectors LED.
Model. UEDB-50001 and UEDB-50002

PRODUCT DRAWING (DIMENSIONS)

SUITABLE FOR WET LOCATIONS

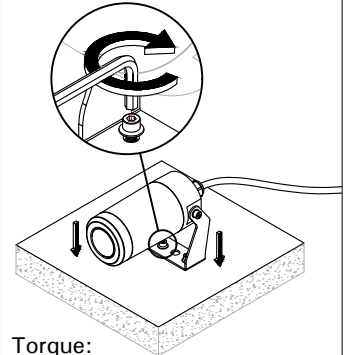


Mounting Detail



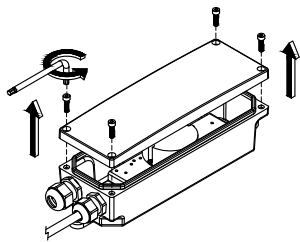
Remote Box By Other

1



Torque:
26.55 in*lb

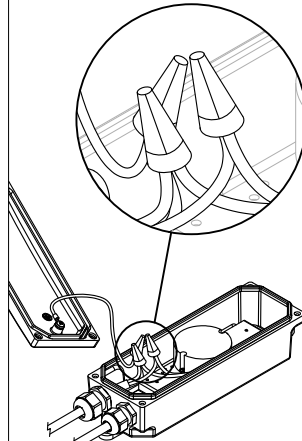
2



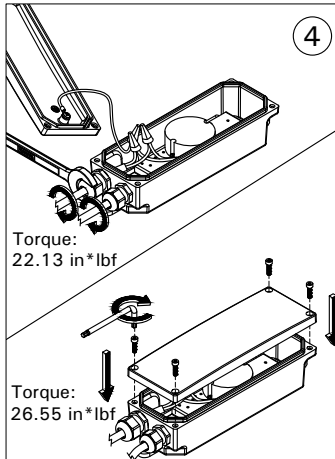
Remote Box By Other

Connect Power
and Ground Wire.

3



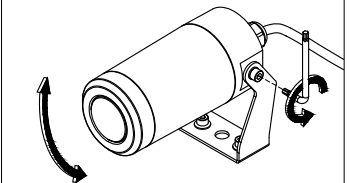
4



Torque:
22.13 in*lb

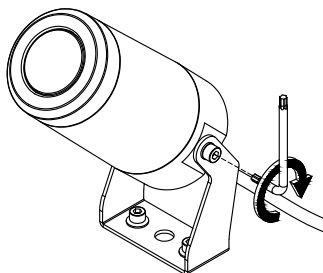
Torque:
26.55 in*lb

5



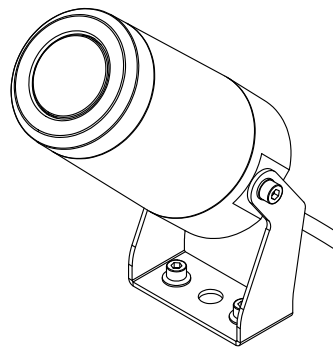
ADJUST

6



Torque:
26.55 in*lb

7



MOUNTING LOCATION

The following guidelines shall be adhered to when selecting the mounting location for the remote driver Box:

1. Choose an area that receives the least exposure to rain and sun, or install it under an awning.
2. Mount the enclosure in an area that is free from sources of electromagnetic interference and radio frequency interference; as these are types of problems that could adversely effect the successful operation and useful life of the electronic equipment housed in the enclosure.
3. Install height above flood levels and in a location that protects them from insects and pests that could damage the wires.
4. Install in an open area for easy maintenance and ventilation to reduce heat buildup of the electronic components inside the enclosure.
5. Mount enclosure at a height that allows easy access to system electronic components for operation, maintenance and service.

Notice to installer :

WIRING INSTRUCTIONS Warning : RISK OF FIRE AND ELECTRICAL SHOCK. : FIXTURE MUST BE INSTALLED BY A QUALIFIED ELECTRICIAN ONLY>FIXTURE IS INTENDED FOR INSTALLATION IN ACCORDANCE WITH THE NATIONAL ELECTRICAL CODE, LOCAL AND FEDERAL CODE SPECIFICATIONS. DISCONNECT POWER BEFORE SERVICING.

Ligman Lighting USA

7144 NE Progress Court, Hillsboro
Oregon, 97124, USA
Tel : 503 645 0500 | Fax : 503 645 8100